

15 SANITARY FACILITIES

15.1 General

The facilities described in this Clause may be used as individual modules, in mirror image configurations or in a combined form, as specified in Clause 15.6.

15.2 Accessible unisex sanitary facilities

15.2.1 Water taps

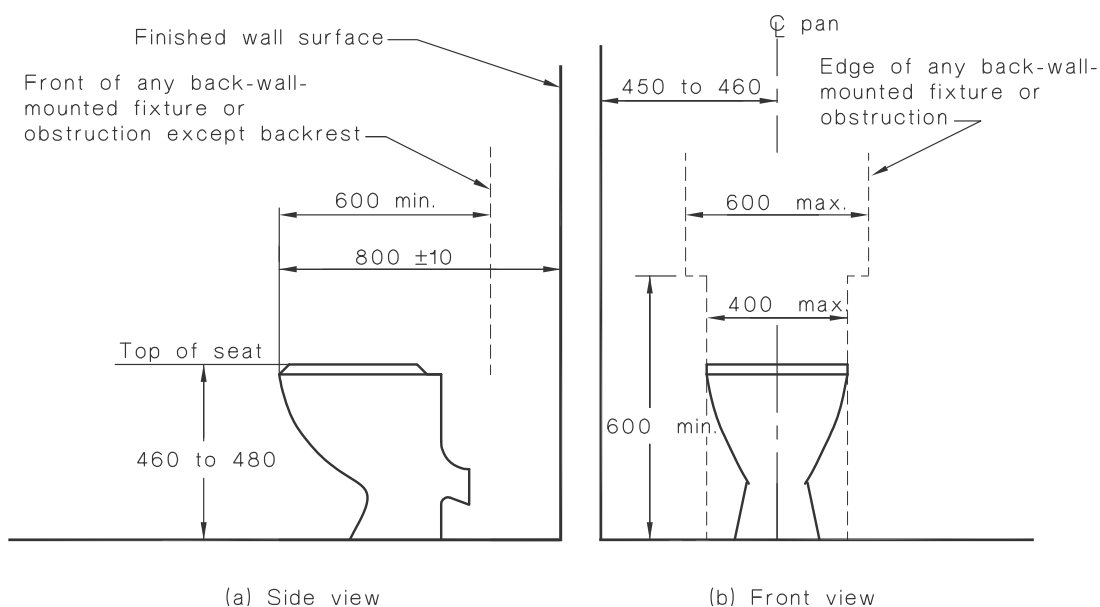
Water taps shall comply with the following:

- Taps shall have lever handles, sensor plates, or other similar controls.
- Lever handles shall have not less than 50 mm clearance from an adjacent surface.
- Where separate taps are provided for hot and cold water, the hot water tap shall be placed to the left of the cold water tap for horizontal configurations, or above the cold water tap for vertical configurations.
- Where hot water is provided, the water shall be delivered through a mixing spout.

15.2.2 WC pan clearances

WC pan clearances, including set-out, seat height and seat width shall be as shown in Figure 38.

A1



NOTES:

- For the purpose of dimensioning, the front of the WC pan has been taken as the datum plane.
- The dimension of 800 ± 10 mm from the front of the WC pan to the wall is a critical dimension.

DIMENSIONS IN MILLIMETRES

FIGURE 38 WATER CLOSET PAN CLEARANCES, SEAT HEIGHT AND SEAT WIDTH

15.2.3 *Seat*

A toilet seat shall be provided on accessible toilets. The toilet seat shall—

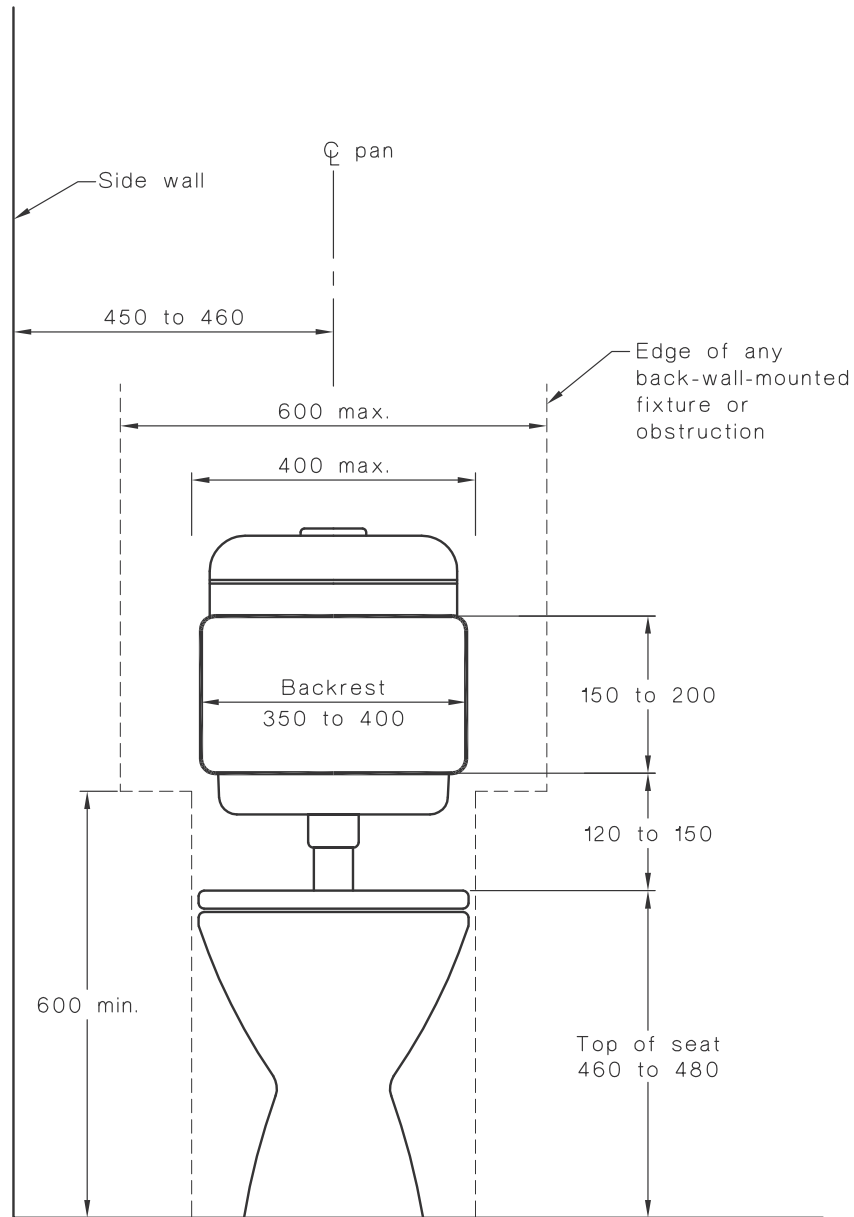
- (a) be of the full-round type, (i.e., not open fronted) and with minimal contours to the top surface;
- (b) be securely fixed in position when in use;
- (c) have seat fixings that create lateral stability for the seat when in use;
- (d) be load-rated to 150 kg; and
- (e) have a minimum luminance contrast of 30% with the background (e.g., pan, wall or floor against which it is viewed).

15.2.4 *Backrest*

A backrest shall be provided on accessible toilets. The backrest shall—

- (a) be capable of withstanding a force in any direction of 1100 N;
- A1 | (b) have a height, at the lower edge of backrest to the top of the WC seat, of 120 mm to 150 mm, as shown in Figure 39(a);
- (c) have a vertical height of 150–200 mm and a width of 350–400 mm, as shown in Figure 39(a); and
- (d) the front edge of the centre of the backrest be positioned to achieve an angle of between 95° to 100° back from the seat hinge (Figure 39(b)).

A1

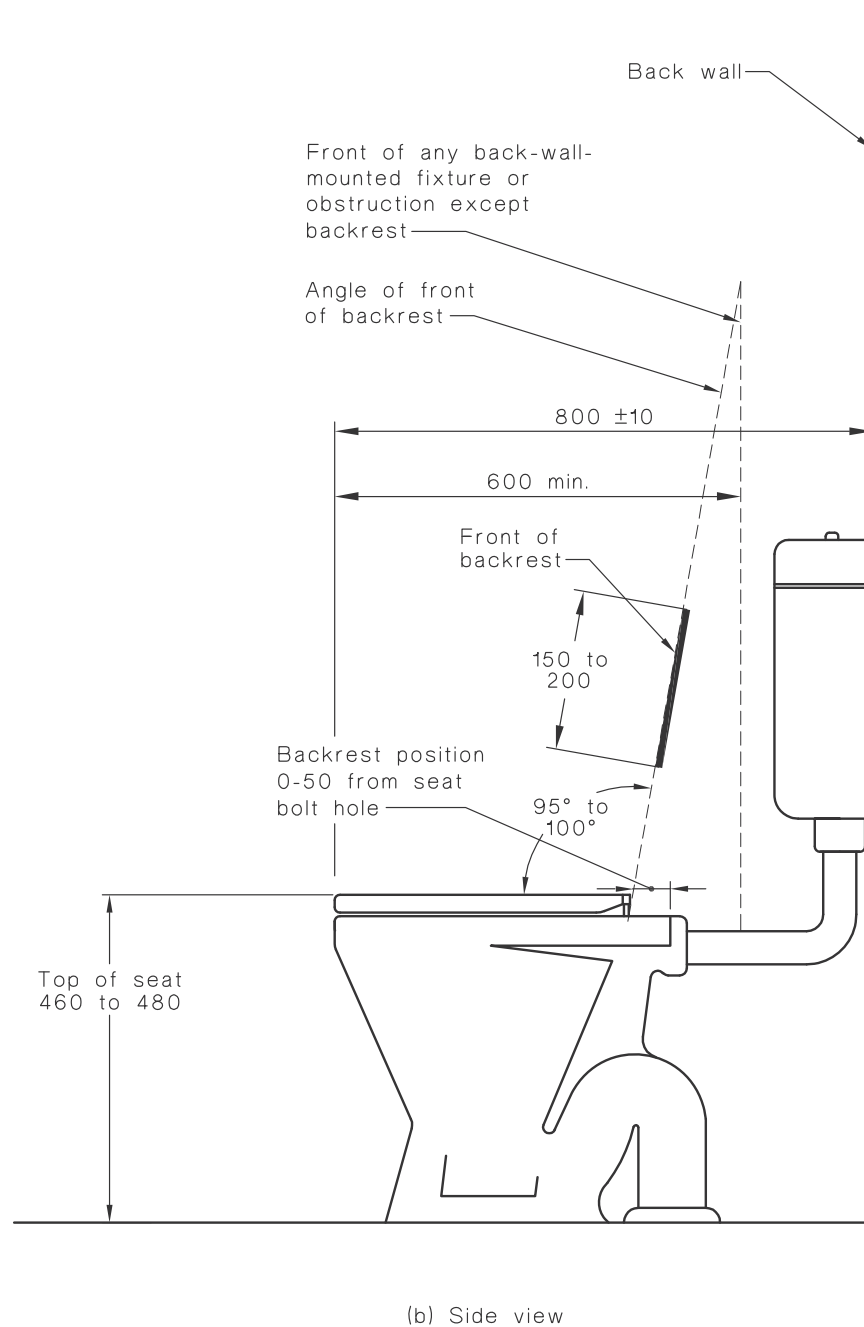


(a) Front view

DIMENSIONS IN MILLIMETRES

FIGURE 39 (in part) WATER CLOSET INSTALLATION

A1



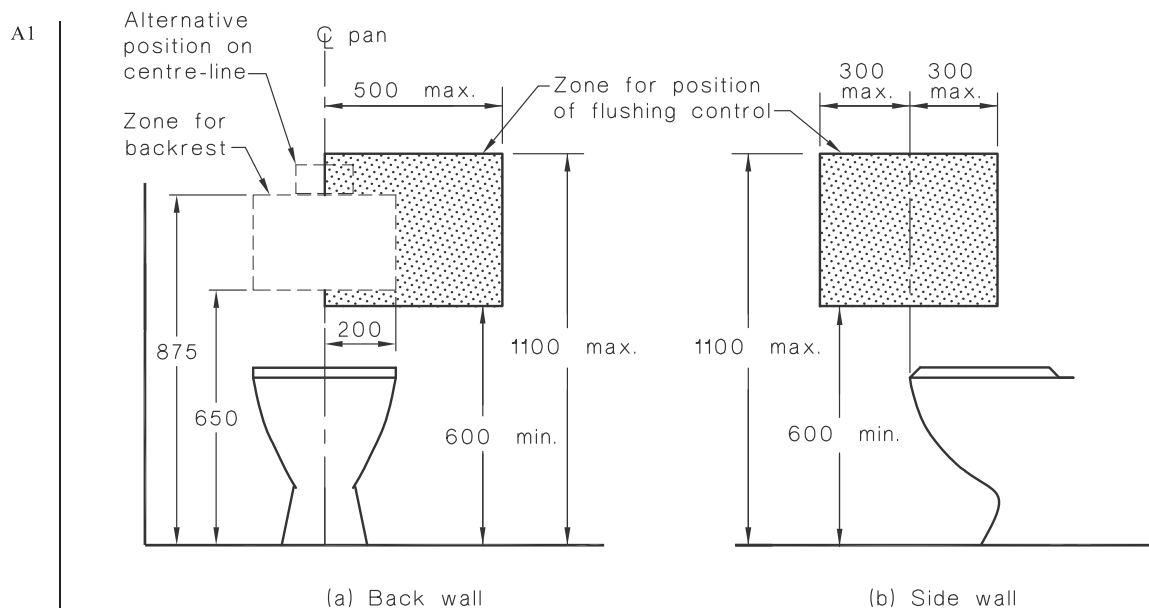
DIMENSIONS IN MILLIMETRES

FIGURE 39 (in part) WATER CLOSET INSTALLATION

15.2.5 Flushing control

Flushing controls shall be user activated, either hand operated or automatic. Where hand-operated flushing controls are used, they shall be located within the zone shown in Figure 40, or centred on the centre-line of the toilet, wholly within the vertical limits of that zone. The position of the flushing control within this zone shall not be within the area required for any grabrails or backrest. The flushing control shall be proud of the surface and shall activate the flush before the button becomes level with the surrounding surface.

A1



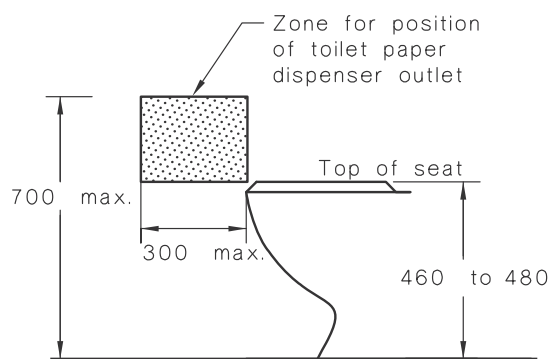
DIMENSIONS IN MILLIMETRES

FIGURE 40 ZONE FOR POSITION OF FLUSHING CONTROL

15.2.6 Toilet paper dispenser

The outlet for the toilet paper dispenser shall be located within the zone specified in Figure 41.

The toilet paper dispenser shall not encroach upon the clearance space required around the grabrail specified in Clause 15.2.7.

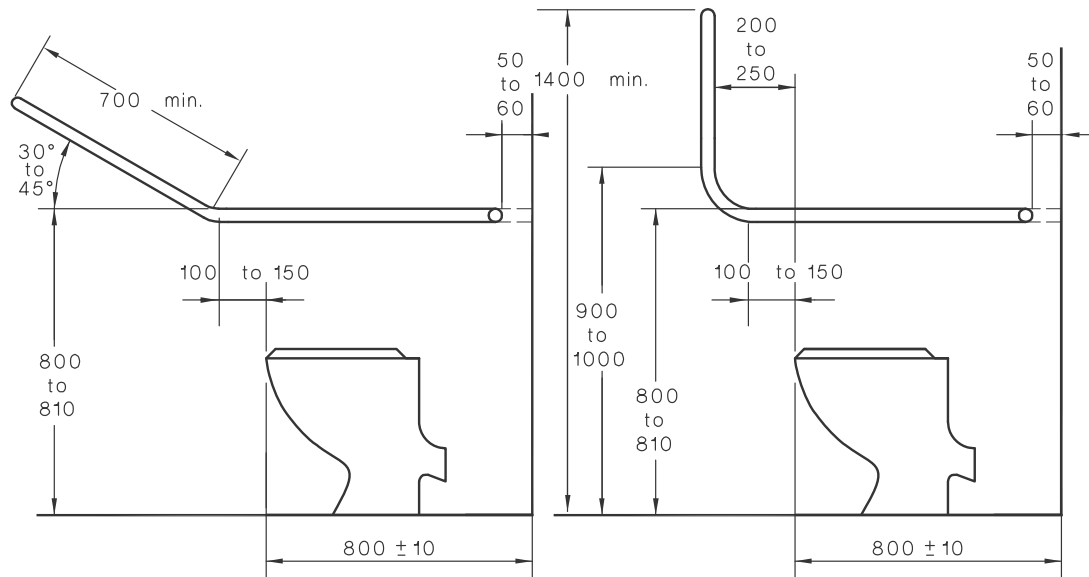


DIMENSIONS IN MILLIMETRES

FIGURE 41 ZONE FOR POSITION OF TOILET PAPER DISPENSER

15.2.7 Grabrails

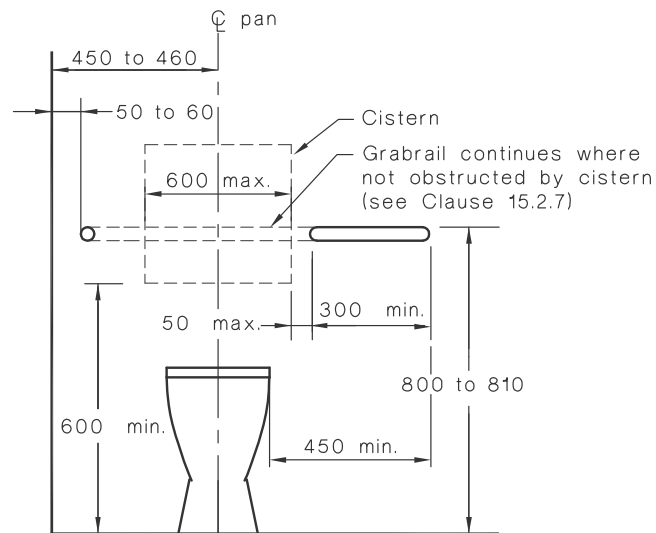
Where a concealed or high-level cistern or flush valve is used, a continuous grabrail, as specified in Clause 17, shall be provided across the rear wall and side wall nearest the WC pan, as shown in Figure 42. Where a low-level non-concealed cistern or flush valve is used, the grabrail shall be terminated at each side of the cistern, as shown in Figure 42.



(i) Option A

(ii) Option B

(a) Side view showing optional systems for grabrail at sides of pan



(b) Grabrail at back of pan and sectional view of grabrail at side of pan

DIMENSIONS IN MILLIMETRES

FIGURE 42 POSITIONS OF GRABRAILS IN WATER CLOSETS

15.2.8 *Circulation space*

15.2.8.1 *General*

For each WC, the unobstructed circulation space from the finished floor to a height of not less than 2000 mm shall be as shown in Figure 43, except for the following, which are allowed to intrude into the circulation space:

- (a) The toilet paper dispenser (see Clause 15.2.6).
- (b) Grabrails (see Clause 15.2.7).
- (c) Washbasin limited to 100 mm intrusion as shown in Figure 43.
- (d) Hand dryers and towel dispensers.
- (e) Soap dispensers (see Clause 15.4.3).
- (f) Shelves (see Clause 15.4.2).
- (g) Wall cabinets, where provided, which shall not protrude more than 150 mm into the circulation space. The mounting of wall cabinets shall be at least 900 mm above floor level and the top shelf shall be a maximum of 1250 mm above floor level.
- (h) Clothes hanging devices (see Clause 15.4.4).
- (i) Portable sanitary disposal unit as shown in Figure 43.
- (j) Other wall mounted fixtures, such as dispensing units and sharps disposal units, which shall have 900 mm minimum height clearance from the finished floor level and a maximum projection of 150 mm from finished wall surface.

The overlapping of circulation spaces shall be in accordance with Clause 15.6.

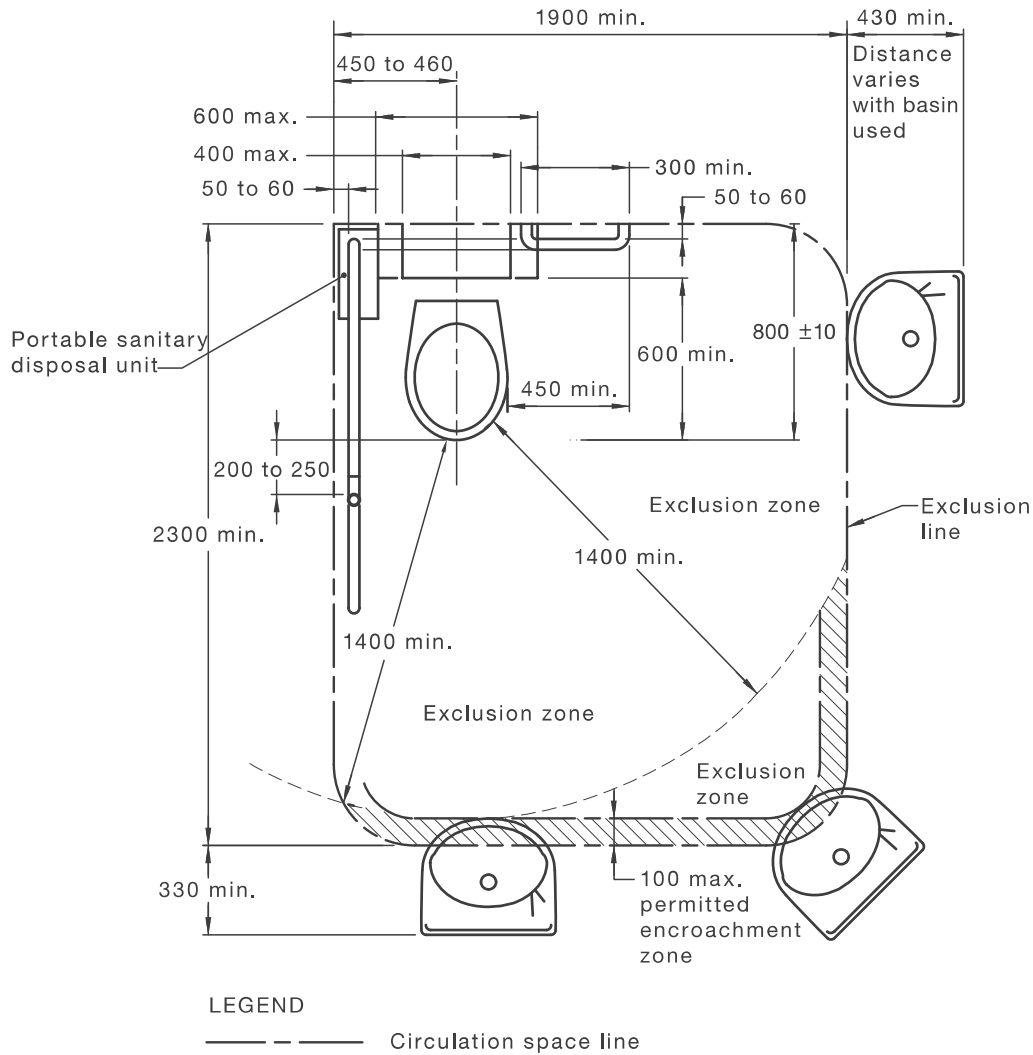
15.2.8.2 *Baby change tables*

Where installed, baby change tables shall—

- (a) not encroach into the circulation space of any other toilet facility when in the folded up position; and
- (b) have a maximum height of 820 mm and a minimum clearance underneath of 720 mm when in the open position.

A1

A1



NOTE: This circulation space may overlap any other circulation spaces specified in this Standard.

DIMENSIONS IN MILLIMETRES

FIGURE 43 CIRCULATION SPACE FOR WC PAN—RIGHT-HAND TRANSFER
(LEFT-HAND TRANSFER IS MIRROR REVERSED)

15.2.9 WC doors

WC doors may be either hinged or sliding. WC doors shall comply with the following:

- Outward-opening doors shall have a mechanism that holds the door in a closed position without the use of a latch.
- Doors shall be provided with an in-use indicator and a bolt or catch. Where a snib catch is used, the snib handle shall have a minimum length of 45 mm from the centre of the spindle. In an emergency, the latch mechanism shall be openable from the outside.
- The force required to operate the door shall be in accordance with Clause 13.5.2(e).
- Door handles and hardware shall be in accordance with Clause 13.5.

15.2.10 *Washbasins for unisex accessible sanitary facilities*

A hand-washing facility shall be provided inside the toilet cubicle and shall form part of the accessible unisex facility (see Clause 15.3).

15.3 Washbasins**15.3.1** *General*

The installation of washbasins shall comply with the following:

- (a) The washbasin shall be outside the pan circulation space as shown in Figure 43.
- (b) Water taps shall comply with Clause 15.2.1.
- (c) Exposed hot water supply pipes shall be insulated or located so as not to present a hazard.
- (d) The projection of the washbasin from the wall and the position of taps, bowl and drain outlet shall be determined in accordance with Figures 44(A) and 44(B); except in sole-occupancy units, where Figure 45 shall apply.
- (e) Water supply pipes and waste outlet pipes shall not encroach on the required clear space under the washbasin.

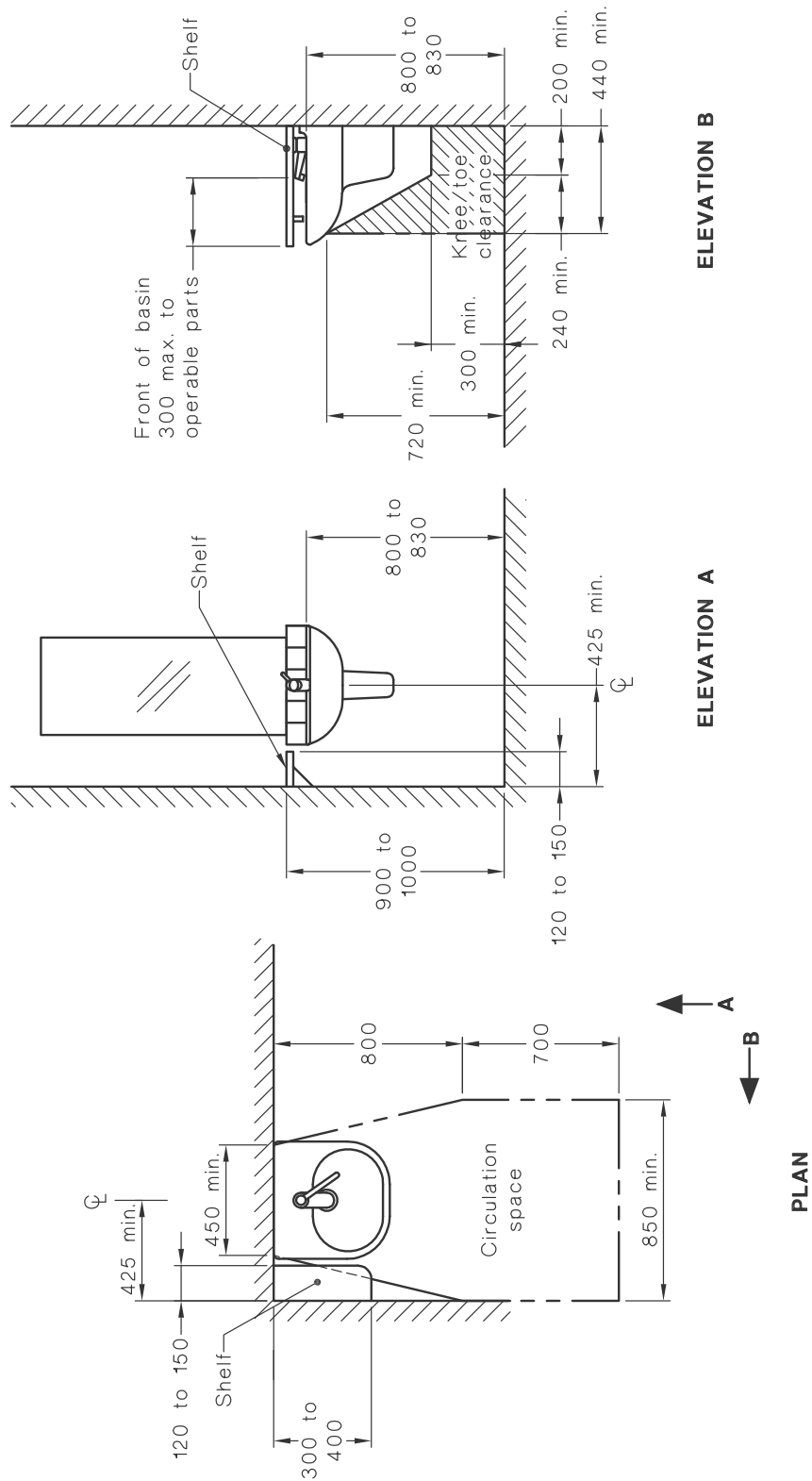
For each washbasin fixture, the unobstructed circulation space shall be as shown in Figure 46; except in sole occupancy units, where Figure 45 shall apply. The washbasin fixture and its fittings are the only fixtures permitted in this space.



DIMENSIONS IN MILLIMETRES

FIGURE 44(A) SEMI-RECESSED WASHBASIN INSTALLATION —OTHER THAN FOR SOLE-OCCUPANCY UNIT

A1



NOTE: 'Operable parts' means the centre-line of the tap or, where a level handle is provided, the end point of the level measure throughout its arc of movement, or where a sensor is provided where the sensor is reliably activated.

FIGURE 44(B) WALL-MOUNTED WASHBASIN INSTALLATION—OTHER THAN FOR SOLE-OCCUPANCY UNIT

DIMENSIONS IN MILLIMETRES

15.3.2 Accessible sole occupancy units

Accessible sole occupancy units shall have the following characteristics:

- (a) The projection of the washbasin from the wall and the position of taps, bowl and drain outlet shall be determined in accordance with Figure 45.
- (b) Water supply pipes and waste outlet pipes shall not encroach on the required clear space under the washbasin, as shown in Figure 45.
- (c) For each washbasin fixture, the unobstructed circulation space shall be in accordance with Figure 46. The washbasin fixture and its fittings are the only fixtures permitted in this space.
- (d) Shelf space shall be provided adjacent to the washbasin in one of the following ways:
 - (i) As a vanity top—
 - (A) at a height of 800 mm to 830 mm above the floor;
 - (B) with a minimum width of 120 mm beside the basin;
 - (C) with a minimum depth of 300 mm from the front to the rear wall; and
 - (D) with no encroachment into any knee and toe clearance space for a minimum width of 850 mm centred on the basin.
 - (ii) As a separate fixture—
 - (A) within any circulation space at a height of 900 mm to 1000 mm with a minimum underside clearance of 850 mm for a width of 120 mm to 150 mm and length of 300 mm to 400 mm; and
 - (B) external to all circulation spaces at a height of 800 mm to 1000 mm with a minimum width of 120 mm and minimum length of 400 mm.



ELEVATION A

PLAN

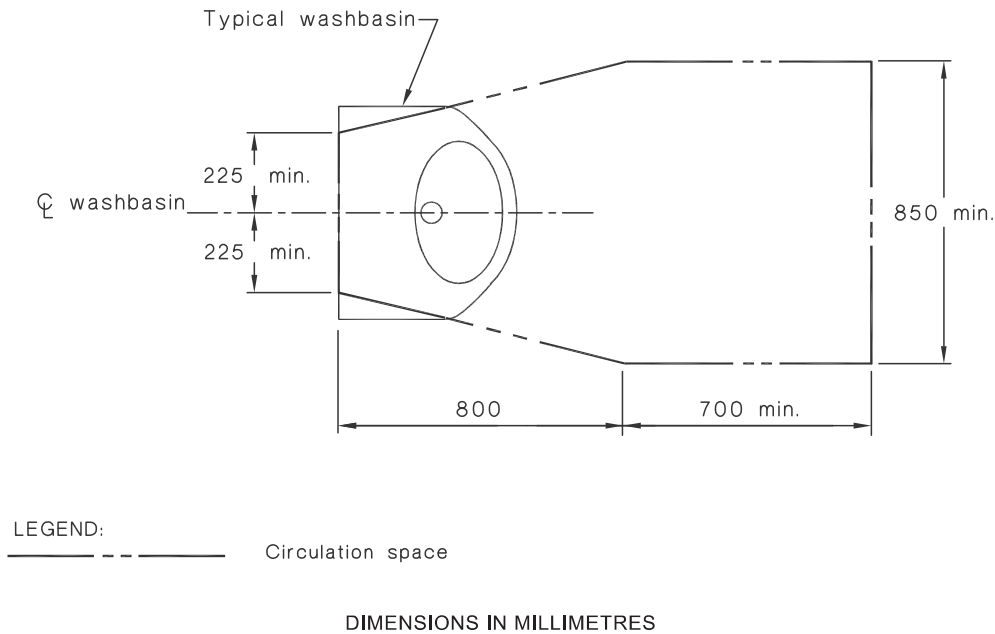


FIGURE 46 CIRCULATION SPACE FOR WASHBASINS

15.4 Fixtures and fittings within a sanitary facility

15.4.1 Mirrors

In all sanitary facilities, the mirror shall be located either above or adjacent to the washbasin.

Where provided, a vertical mirror with a reflective surface not less than 350 mm wide shall extend from a height of not more than 900 mm to a height of not less than 1850 mm above the plane of the finished floor. Where provided, a second vertical mirror shall extend from a height of not less than 600 mm to a height of not less than 1850 mm above the plane of the finished floor.

NOTE: Angled or tilted mirrors should not be used since they do not work for all users or accessible facilities.

In an accessible sole occupancy unit, the mirror shall be centred over the washbasin.

15.4.2 Shelves

Shelf space shall be provided adjacent to the washbasin in one of the following ways:

- (a) As a vanity top at a height of 800 mm to 830 mm and a minimum width of 120 mm and depth of 300 mm to 400 mm without encroaching into any circulation space.
- (b) As a separate fixture—
 - (i) within any circulation space at a height of 900 mm to 1000 mm with a width of 120 mm to 150 mm and length of 300 mm to 400 mm; and
 - (ii) external to all circulation spaces at a height of 790 mm to 1000 mm with a minimum width of 120 mm and minimum length of 400 mm.

15.4.3 Soap dispensers, towel dispensers and similar fittings

Where provided, soap dispensers, towel dispensers, hand dryers and similar fittings shall be operable by one hand, and shall be installed with the height of their operative component or outlet not less than 900 mm and not more than 1100 mm above the plane of the finished floor, and no closer than 500 mm from an internal corner.

15.4.4 Clothes-hanging devices

A clothes-hanging device shall be installed 1200 mm to 1350 mm above the plane of the finished floor and not less than 500 mm out from any internal corner.

15.4.5 Sanitary disposal unit

Where provided, the sanitary disposal unit shall be located as follows:

- (a) Portable unit as shown in Figure 43.
- (b) Recessed unit within 500 mm from the pan.

15.4.6 Switches and general purpose outlets

Where provided near the washbasin, switches and general purpose outlets shall be located in accordance with Clause 14 and as close to the shelf or worktop as practicable.

15.5 Showers**15.5.1 General**

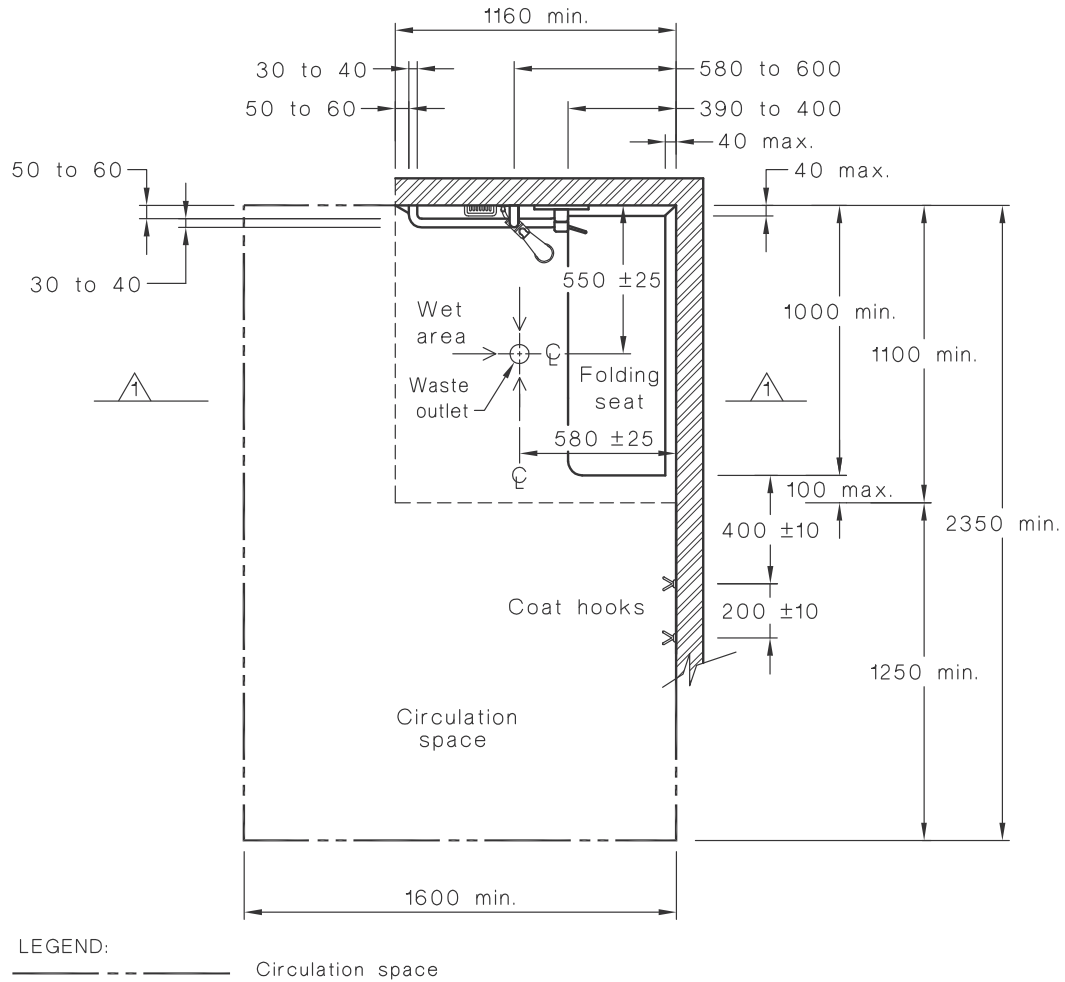
The general requirements for showers are as follows:

- (a) Shower recesses and the circulation space for each shower recess from the finished floor to a height of not less than 900 mm shall be as shown in Figure 47. Grabrails, shower hose fittings; taps, soap holder, shelf (if provided) and the folding seat are the only fixtures permitted in these spaces.
- (b) Shower recess fittings shall be provided as shown in Figures 47 and 48. Not less than two clothes-hanging devices, as specified in Clause 15.4.4, shall be fitted outside the shower recess. One such device shall be located within 400 ± 10 mm and the other within 600 ± 10 mm of the folding seat.
- (c) If two or more shower recesses are provided, at least one shall be of the opposite hand.

15.5.2 Floor and waste outlet

The requirements for the floor and waste outlet are as follows:

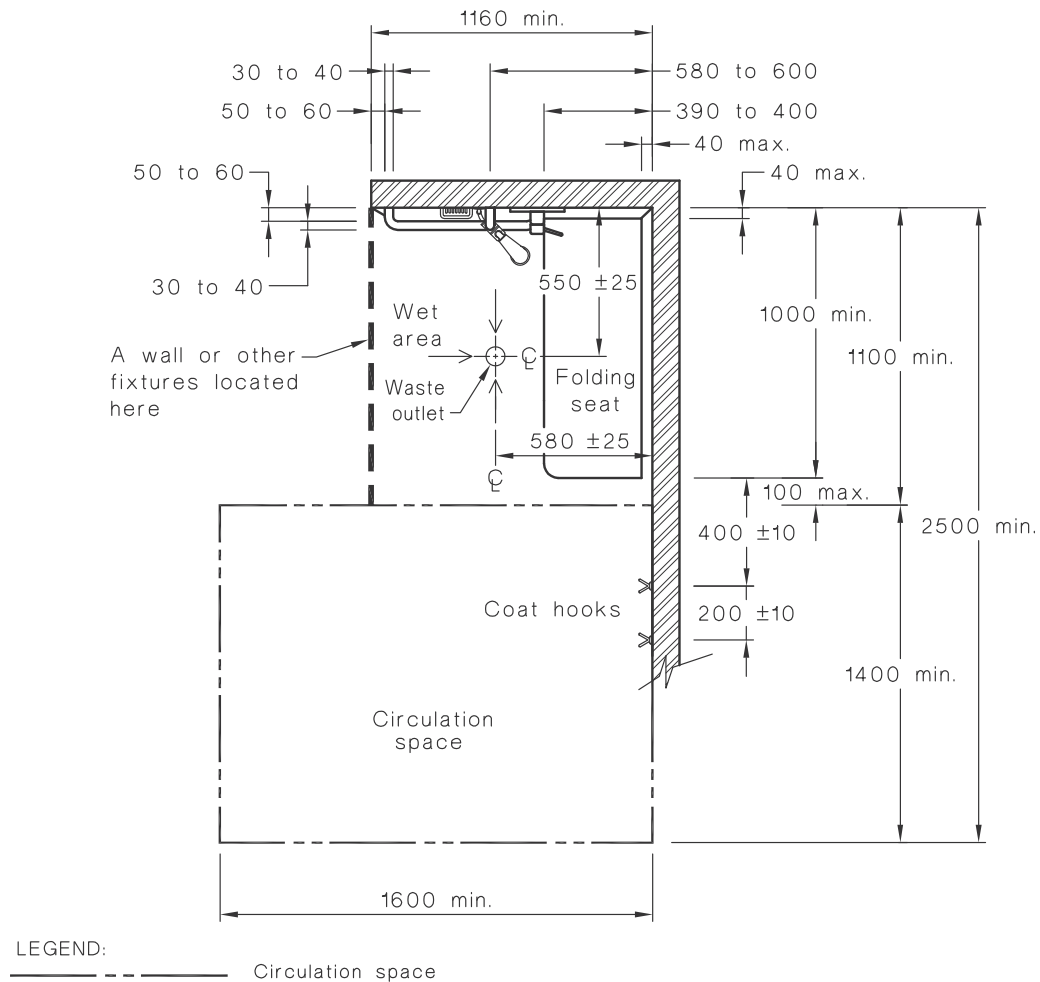
- (a) The floor of the shower recess and associated circulation space shall be self-draining and without a step-down, raised step kerb or hob at the entry to the recess.
- (b) The waste outlet for the shower shall be provided in accordance with Figure 47.
- (c) The slope of the floor of the shower recess shall have a gradient between 1 in 60 and 1 in 80, as shown in Figure 49.
- (d) The slope of floor of the remainder of the sanitary facility shall have a gradient between 1 in 80 and 1 in 100, as shown in Figure 49.



(a) Shower recess with two walls

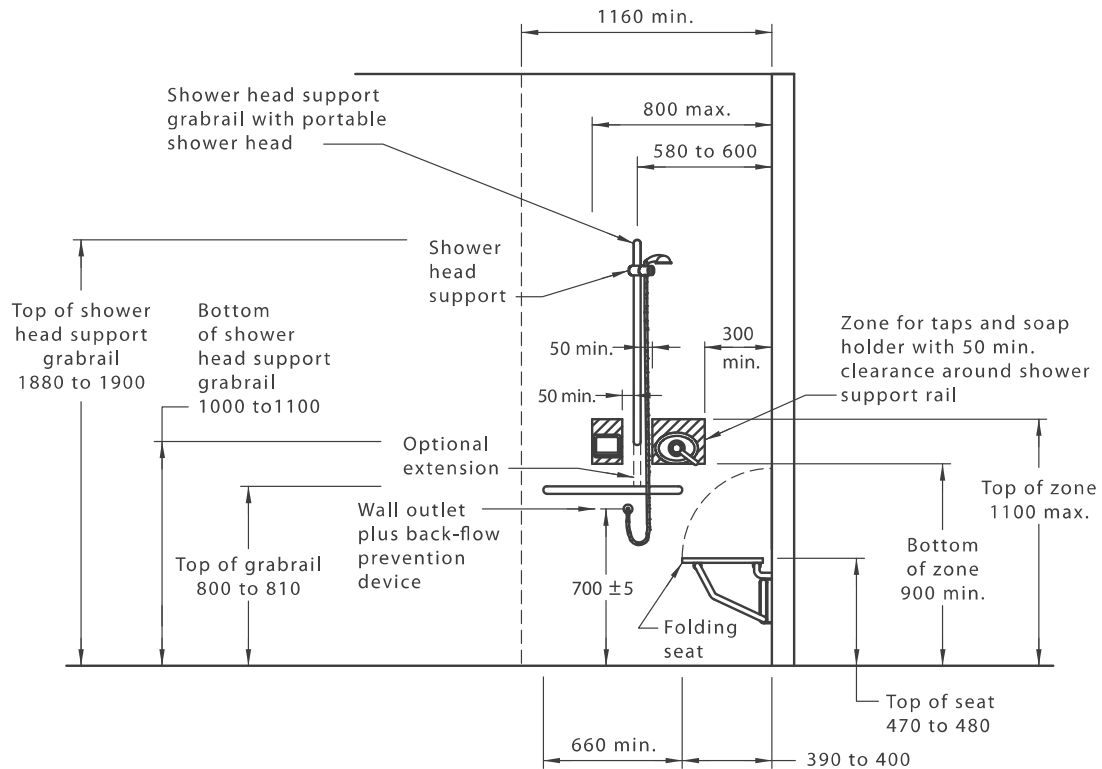
DIMENSIONS IN MILLIMETRES

FIGURE 47 (in part) SHOWER RECESS AND CIRCULATION SPACE—PLAN



(b) Shower recess with a third side provided by a wall or other fixtures

FIGURE 47 (in part) SHOWER RECESS AND CIRCULATION SPACE—PLAN



DIMENSIONS IN MILLIMETRES

FIGURE 48 SHOWER RECESS FITTINGS—ELEVATION

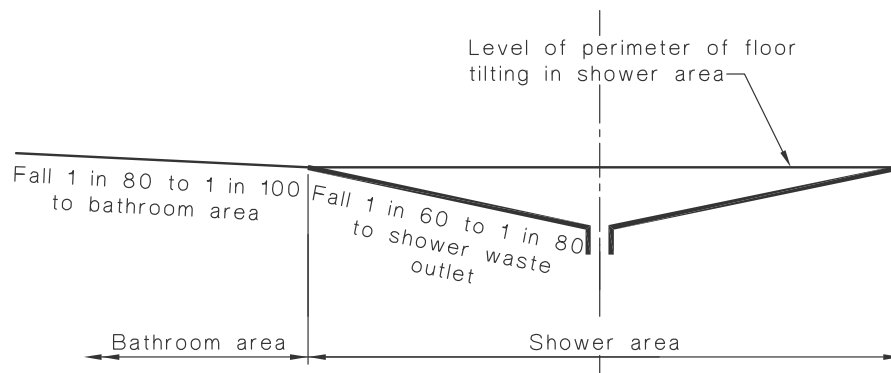


FIGURE 49 GRADES FOR BATHROOM AND SHOWER FLOORS

15.5.3 Opening shower screens

The means of screening a shower recess shall be either by a curtain or a door system that maintains the required circulation space of 1600 mm × 2350 mm.

15.5.4 Grabrails

Grabrails, as specified in Clause 17, shall be fixed on the walls in the positions shown in Figures 47 and 48. Taps, soap holder and shower head support grabrail, as shown in Figures 47 and 48 may encroach into the 600 mm clearance above the grabrail required by Clause 17(e).

15.5.5 Shower head support grabrail

A shower head support grabrail, as specified in Clause 17, shall be fixed on the wall in the position shown in Figure 48.

15.5.6 Shower head

A hand-held shower head shall be provided, which shall have a flexible hose of a minimum length of 1500 mm.

An adjustable shower head holder shall be provided to support the shower head and shall—

- (a) be installed on the shower head holder support grabrail as shown in Figure 48;
- (b) allow the graspable portion of the shower head to be positioned at various angles and heights;
- (c) allow the graspable portion of the shower head to be located at heights between 1000 mm and 1800 mm above the plane of the finished floor; and
- (d) allow access and adjustment from a seated position.

15.5.7 Soap holder

The soap holder shall be located within the zone shown in Figure 48.

15.5.8 Taps

Taps, as specified in Clause 15.2.1, shall be located within the zone shown in Figure 48.

15.5.9 Folding seat

A foldable seat shall be provided inside the shower recess, as shown in Figures 47 and 48, and shall—

- (a) be self-draining;
- (b) be slip-resistant;
- (c) have front corners that are rounded to a radius of 10 to 15 mm;
- (d) have top edges that are rounded with a minimum radius of 2 to 3 mm; and
- (e) shall fold in an upwards direction and when folded the grabrail shall be accessible.

Where drainage is provided by holes or slots in single unit seats or by gaps between slats in compound seats, the diameter of the holes, the width of the slots and the gaps between slats shall be between 4 to 6 mm.

The fastenings, materials and construction of the seat shall be able to withstand a force of 1100 N applied at any position and in any direction without failing or loosening of fastenings.

15.5.10 Clothes hanging devices

Two clothes hooks shall be installed within reach of the shower seat, as shown in Figure 47.

A1

15.6 Circulation spaces in accessible sanitary facilities

The circulation spaces in accessible sanitary facilities shall be in accordance with Clause 15.2.8 and Figures 43 to 47 and 50. The following also apply:

- (a) Circulation spaces, including door circulation spaces, may be overlapped.
- (b) With the following exceptions, fixtures shall not encroach into circulation spaces:

A1 | (i) The washbasin may encroach into the WC circulation space in accordance with Figure 43 and 50.

A1 | (ii) 'deleted'

(iii) The washbasin may encroach into the circulation space of the door in accordance with Figures 51(A) and 51(B).

NOTE: An example of an overlapping circulation space in a sanitary compartment is shown in Figure 52.

Clearances beneath the washbasin shall be in accordance with Clause 15.3 and door circulation spaces shall be in accordance with Clause 13.3 modified in accordance with Item (b)(ii) or (b)(iii) of this Clause, if appropriate.

A1 |

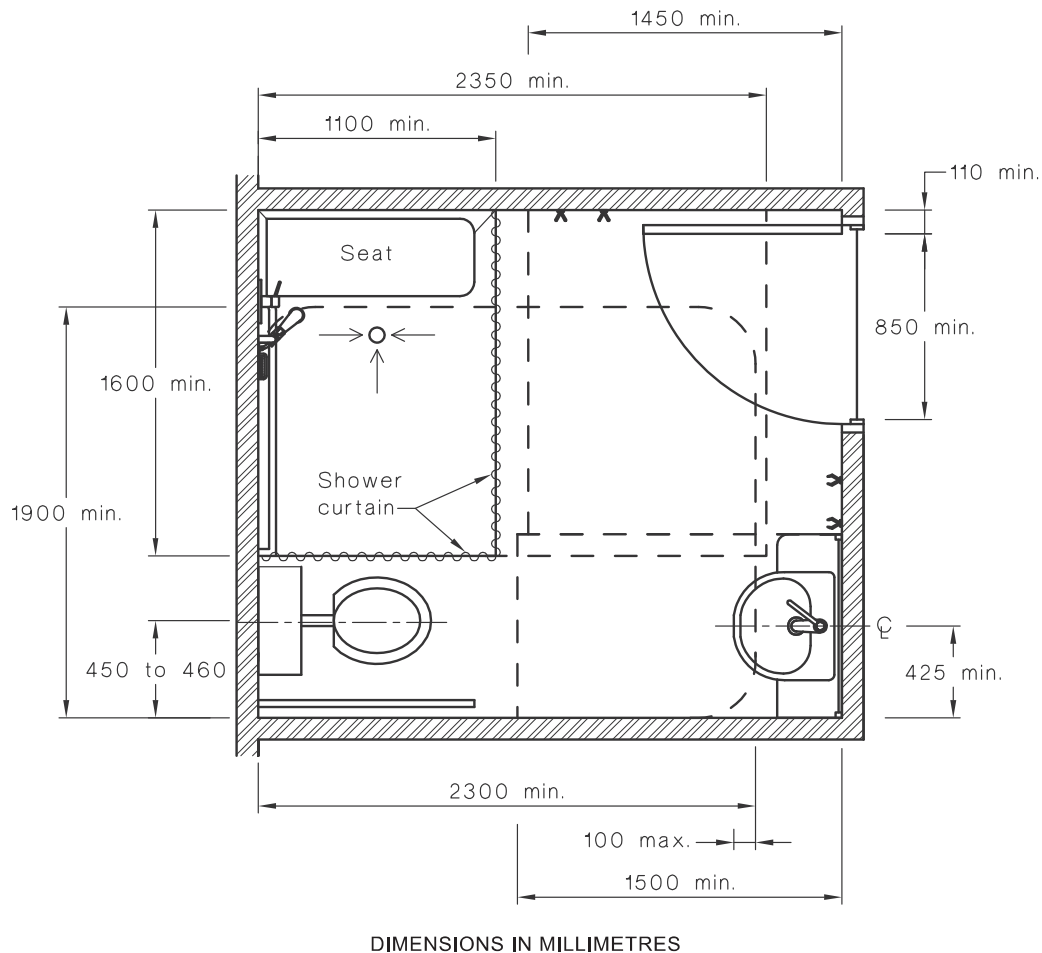
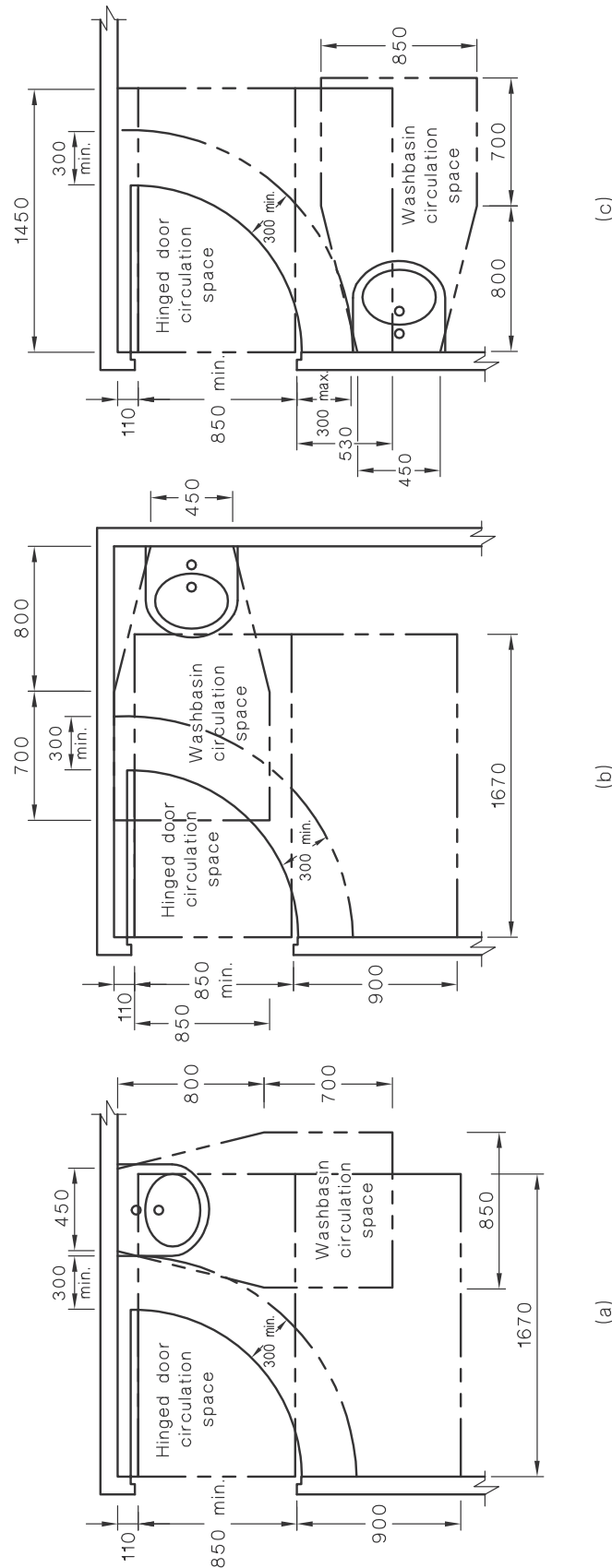
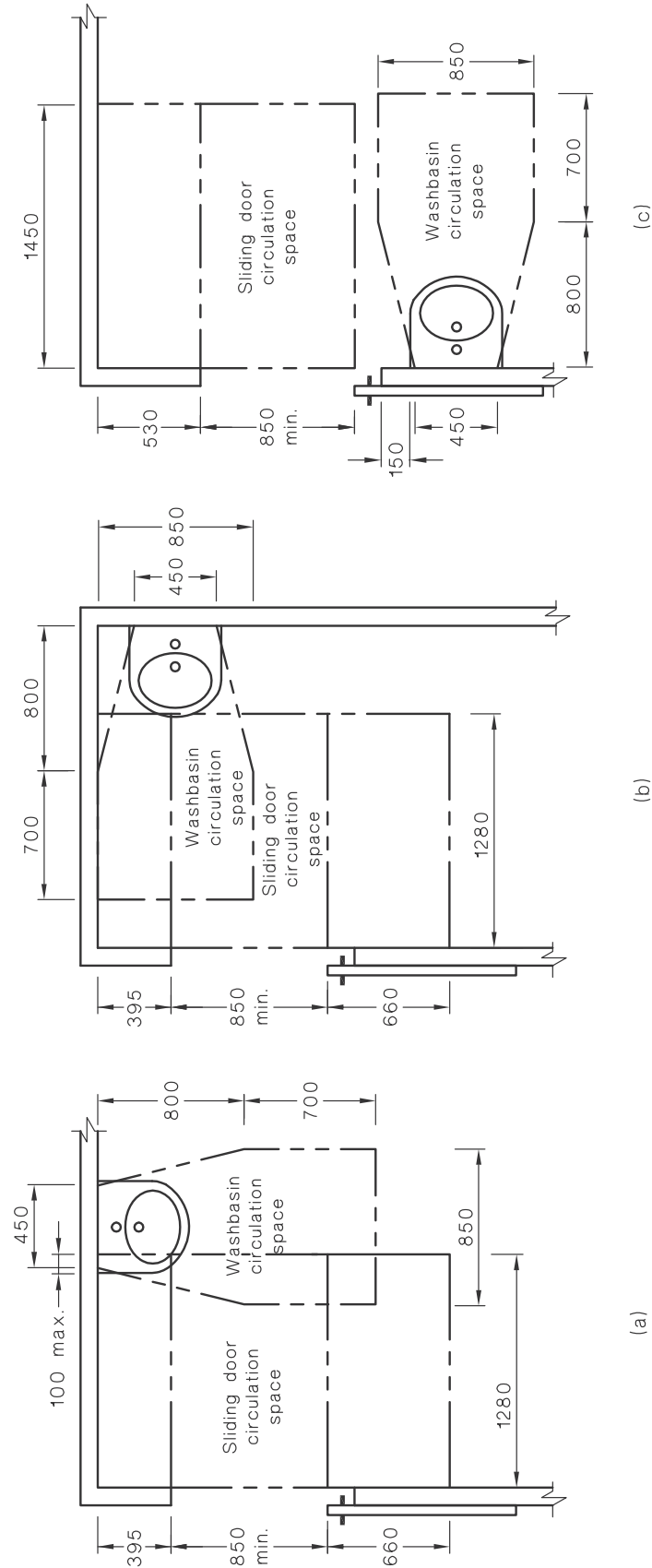


FIGURE 50 SANITARY COMPARTMENT SHOWING OVERLAP OF WASHBASIN FIXTURE INTO SHOWER CIRCULATION SPACE



DIMENSIONS IN MILLIMETRES

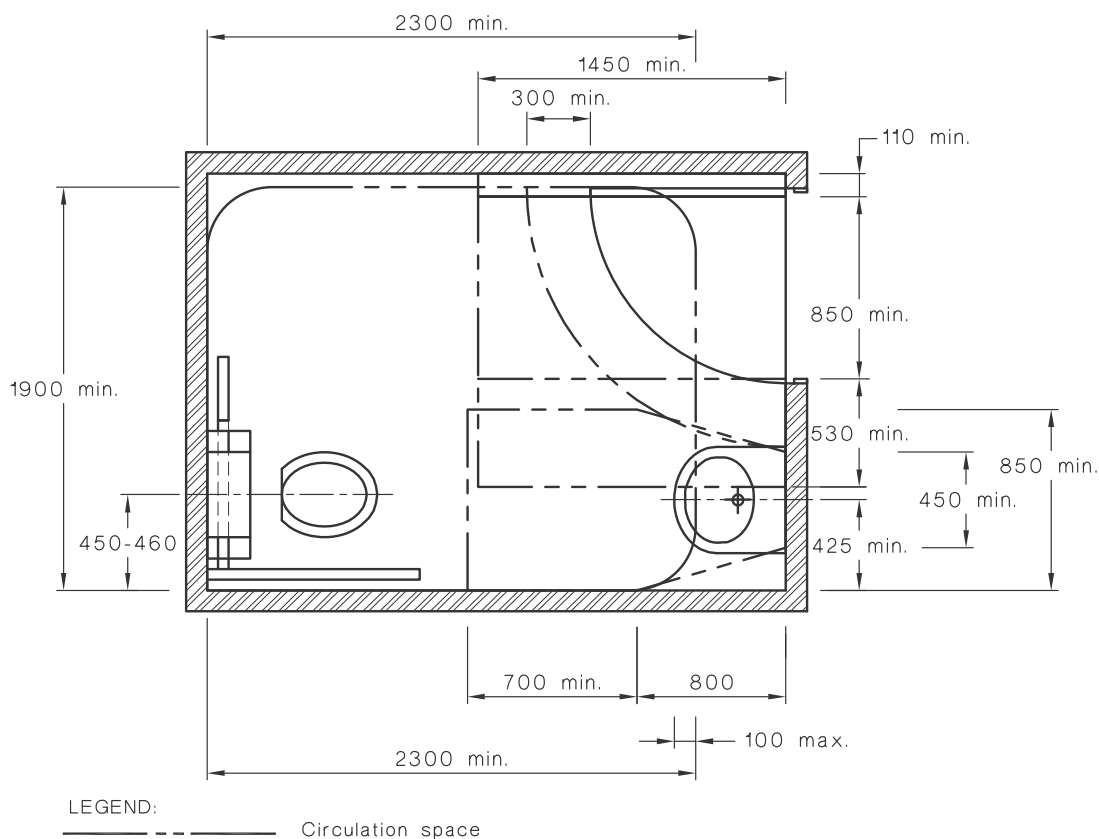
FIGURE 51(A) ALLOWABLE ENCROACHMENT OF A WASHBASIN INTO HINGED DOOR CIRCULATION SPACE



DIMENSIONS IN MILLIMETRES

FIGURE 51(B) OVERLAP OF WASHBASIN FIXTURE INTO DOOR CIRCULATION SPACE WHERE WASHBASIN IS LOCATED OPPOSITE A SLIDING DOOR

A1



DIMENSIONS IN MILLIMETRES

FIGURE 52 EXAMPLE OF OVERLAPPING CIRCULATION SPACES IN A SANITARY COMPARTMENT

16 SANITARY COMPARTMENT FOR PEOPLE WITH AMBULANT DISABILITIES

16.1 General

Sanitary compartment for people with ambulant disabilities shall be in accordance with Figures 53(A) and 53(B).

16.2 Grabrails

Grabrails shall be installed in accordance with Clause 17 and Figure 53(A).

16.3 Doors

Doors to sanitary compartments for people with ambulant disabilities shall have openings with a minimum clear width of 700 mm, and shall comply with Figure 53(B).

Doors shall be provided with an in-use indicator and a bolt or catch. Where a snib catch is used, the snib handle shall have a minimum length of 45 mm from the centre of the spindle. In an emergency, the latch mechanism shall be operable from the outside.

16.4 Signage

Sanitary compartment for people with ambulant disabilities shall be identified by symbol or words, as specified in Clause 8.

16.5 Coat hook

A coat hook shall be provided within the sanitary compartment and at a height between 1350 mm to 1500 mm from the floor.

A1

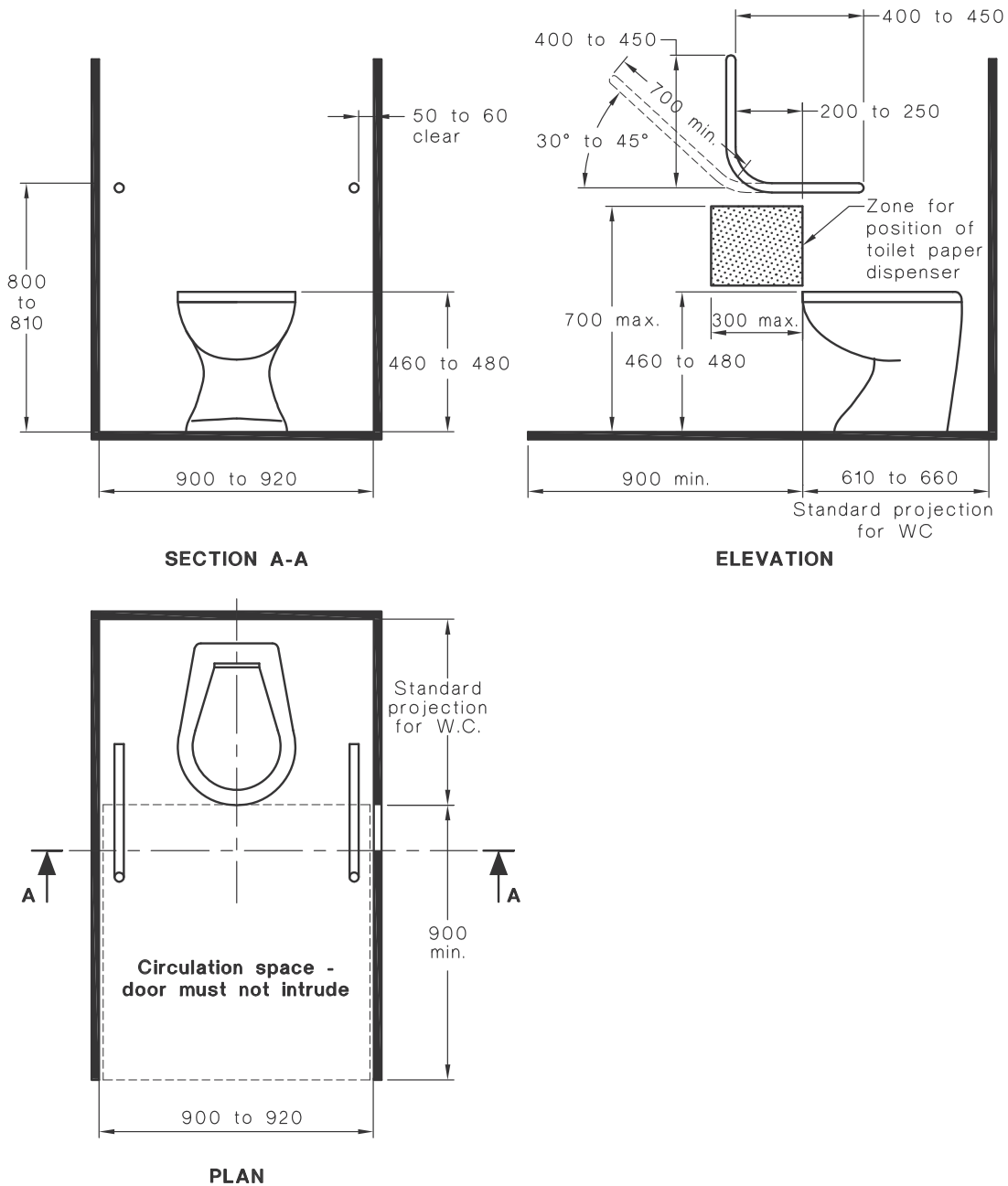
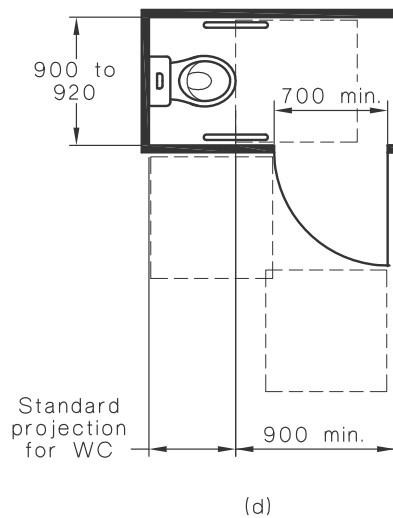
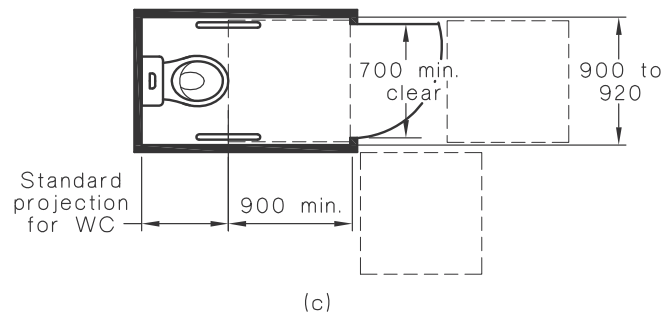
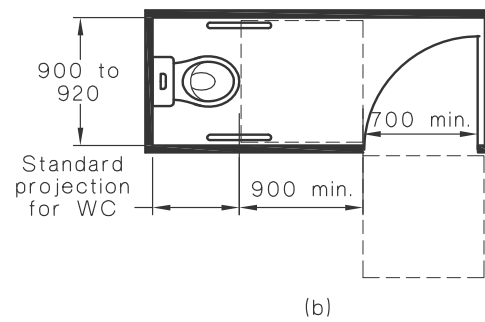
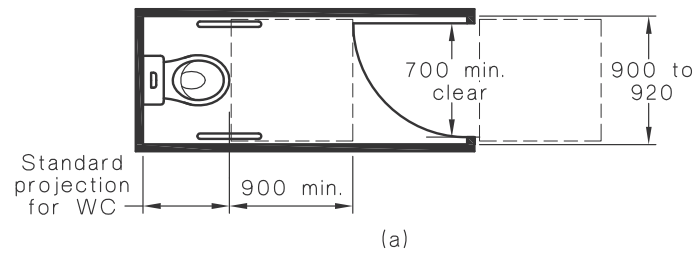


FIGURE 53(A) SANITARY COMPARTMENT FOR PEOPLE WITH AMBULANT DISABILITIES—PLAN AND ELEVATION



LEGEND:



900 x 900 circulation space

DIMENSIONS IN MILLIMETRES

FIGURE 53(B) SANITARY COMPARTMENT FOR PEOPLE WITH AMBULANT DISABILITIES—DOORWAY OPTIONS